

**CITY OF SAMMAMISH
WASHINGTON
RESOLUTION NO. R2023-**

**A RESOLUTION OF THE CITY OF SAMMAMISH,
WASHINGTON, APPROVING THE VISION FOR THE 2024
COMPREHENSIVE PLAN PERIODIC UPDATE.**

WHEREAS, the City of Sammamish is required by the Washington State Growth Management Act to develop, adopt, and periodically review and update a comprehensive plan that plans for population growth in a coordinated and intentional way; and

WHEREAS, the City of Sammamish adopted its Comprehensive Plan in 2003 and has since completed periodic reviews pursuant to the schedule provided in RCW 36.70A.130; and

WHEREAS, the last periodic update of the Sammamish Comprehensive Plan was completed in 2015 and adopted by Ordinance No. 2015-396; and

WHEREAS, the current periodic update of the Sammamish Comprehensive Plan must be adopted by December 31, 2024; and

WHEREAS, the City has developed a Vision to inform and guide the Comprehensive Plan Periodic Update that is an aspirational description of the City's future while highlighting the goals, values, and priorities to be reflected in the City's policies and actions; and

WHEREAS, the City's Vision was last updated in 2015, prior to the 2015 Comprehensive Plan update, and outlined goals and prioritized ideas for what Sammamish should be like in 2035; and

WHEREAS, in 2021, the City conducted the Community Visioning Project to update the City's Vision in advance of the 2024 Comprehensive Plan Periodic Update; and

WHEREAS, the Community Visioning Project included extensive stakeholder engagement, such as a statistically valid survey, open house and town hall events, and meetings with City Boards, Commissions, and the City Council; and

WHEREAS, on April 5, 2022, the City Council reviewed the results of the Community Visioning Project and directed further work should be done to finalize the Vision as part of the 2024 Comprehensive Plan Periodic Update; and

WHEREAS, on September 20, 2022, during a joint meeting with the Sammamish Planning Commission and City Council, staff presented an approach for finalizing the Vision as part of the 2024 Comprehensive Plan Periodic Update that utilized the work completed during the 2021 Community Visioning Project and would include further community feedback through the

Envision Sammamish 2044 Planning Summit; and

WHEREAS, on November 7, 2022, the City conducted the Envision Sammamish 2044 Planning Summit event on Visioning that presented key themes identified during the 2021 Community Visioning project, an approach for completing a Vision for the 2024 Comprehensive Plan Periodic Update, and facilitated public engagement on envisioning Sammamish in 2044; and

WHEREAS, on December 8, 2022, the Sammamish Planning Commission participated in a visioning workshop to generate key themes and ideas that build upon community feedback and that should be included in the final vision statement; and

WHEREAS, on December 13, 2022, the City Council participated in a visioning workshop to generate key themes and ideas that build upon community feedback and that should be included in the final vision statement; and

WHEREAS, on February 2, 2022, the Planning Commission reviewed the draft Vision and provided final comments and amendments which staff incorporated; and

WHEREAS, on February 14, 2022, the City Council reviewed the draft Vision and provided final comments and amendments which staff incorporated;

NOW, THEREFORE, THE CITY COUNCIL OF THE CITY OF SAMMAMISH, WASHINGTON, DO RESOLVE AS FOLLOWS:

Section 1. Approval of the Vision for the Sammamish 2024 Comprehensive Plan Periodic Update. The Vision for the 2024 Sammamish Comprehensive Plan Periodic Update, as set forth in Attachment 1 attached hereto and incorporated by reference, is hereby approved.

PASSED BY THE CITY COUNCIL AT A REGULAR MEETING THEREOF ON THE 21st DAY OF MARCH 2023.

CITY OF SAMMAMISH

Mayor Kali Clark

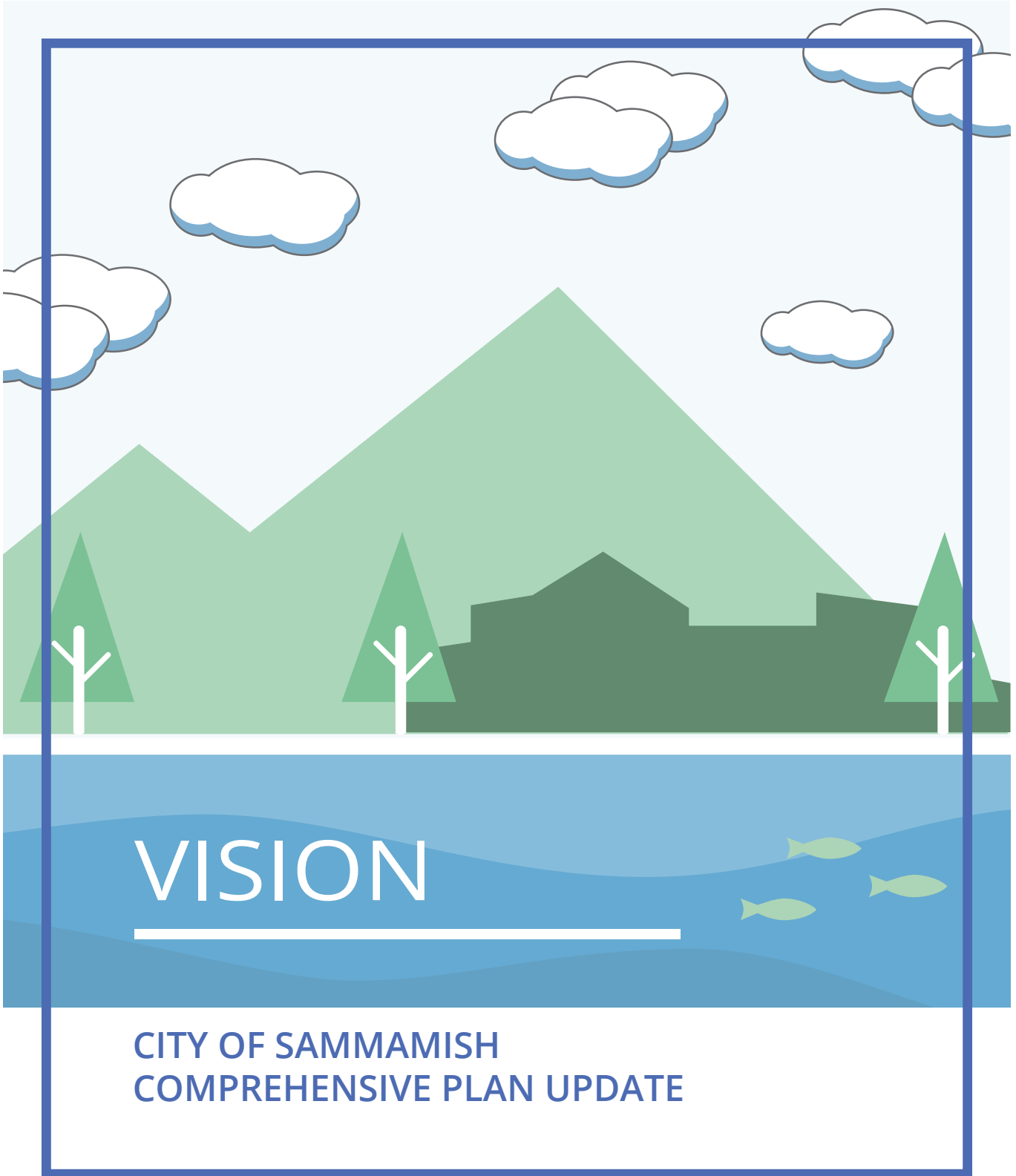
ATTEST/AUTHENTICATED:

Lita Hachey, City Clerk

Approved as to form:

Kari L. Sand, City Attorney
Ogden Murphy Wallace, P.L.L.C.

Filed with the City Clerk:
Passed by the City Council:
Resolution No.: R2023-



VISION

CITY OF SAMMAMISH COMPREHENSIVE PLAN UPDATE





SAMMAMISH 2044 PLANNING VISION

The Sammamish 2044 vision builds on community needs, carrying forward the **Planet** (environmental quality), **People** (social equity), and **Prosperity** (economic vitality) foundations of the 2035 Comprehensive Plan, and adapting them to the evolving context.

To achieve the vision framework, Sammamish 2044 forwards the above three foundations of Planet, People and Prosperity to organize community aspirations into ten vision strategies. The vision strategies are a synthesis of multiple outreach efforts including five Planning Summit workshops with the public, a workshop with the city council, a workshop with the planning commission, a workshop with the city staff, and the Community Visioning project done by the City in Spring 2022.

Vision Framework

In 2044, Sammamish is a regional model for an equitable and sustainable community in harmony with nature. Featuring beautiful natural surroundings, a vibrant park system, lively mixed-use centers, connected neighborhoods, thriving local businesses, and active cultural scenes, Sammamish is a beloved place to live, work, and visit.

Vision Strategies

Sustainable Natural and Built Environment

1. Sustain Natural Environment and Reduce Climate Impacts.
2. Develop Multimodal Transportations.
3. Develop a Distinguished Park and Recreation System.

Equitable Social Environment

4. Ensure Inclusive, Connected, and Safe Neighborhoods.
5. Provide a Variety of Housing Choices and Support a Wide Array of Lifestyles.
6. Increase Diverse Job Opportunities and Access to Work in Sammamish.
7. Foster Diversity, Equity and Inclusion through Purposeful Engagement and Quality Human Services.

Viable Economic Development

8. Build Thriving Town Center and Mixed-use Districts.
9. Support Local Businesses and Entrepreneurship.
10. Establish Fiscal Sustainability and Diversify Revenues for the City.



Planning Values

The planning values pertain to the principles that steer the city's development and management, reflecting the community's aspirations and needs, and serve as an instrument in shaping the city's identity, character, and overall quality of life. In response to the vision and strategies, the following values guide Sammamish's planning to become a sustainable and equitable community by 2044.

1. PLANET

Environmental Responsibility: Sammamish values the natural environment and ecological resources.

- We exemplify and enact sustainable practices in our organization and community.
- We build climate resiliency to adapt to and prepare for climate change impacts, reducing vulnerability, and building recovery capacity.

2. PEOPLE

Inclusivity: Sammamish welcomes all people, regardless of their backgrounds, to live, work, and visit the city, and fosters a community culture that values diversity, equity, and inclusivity.

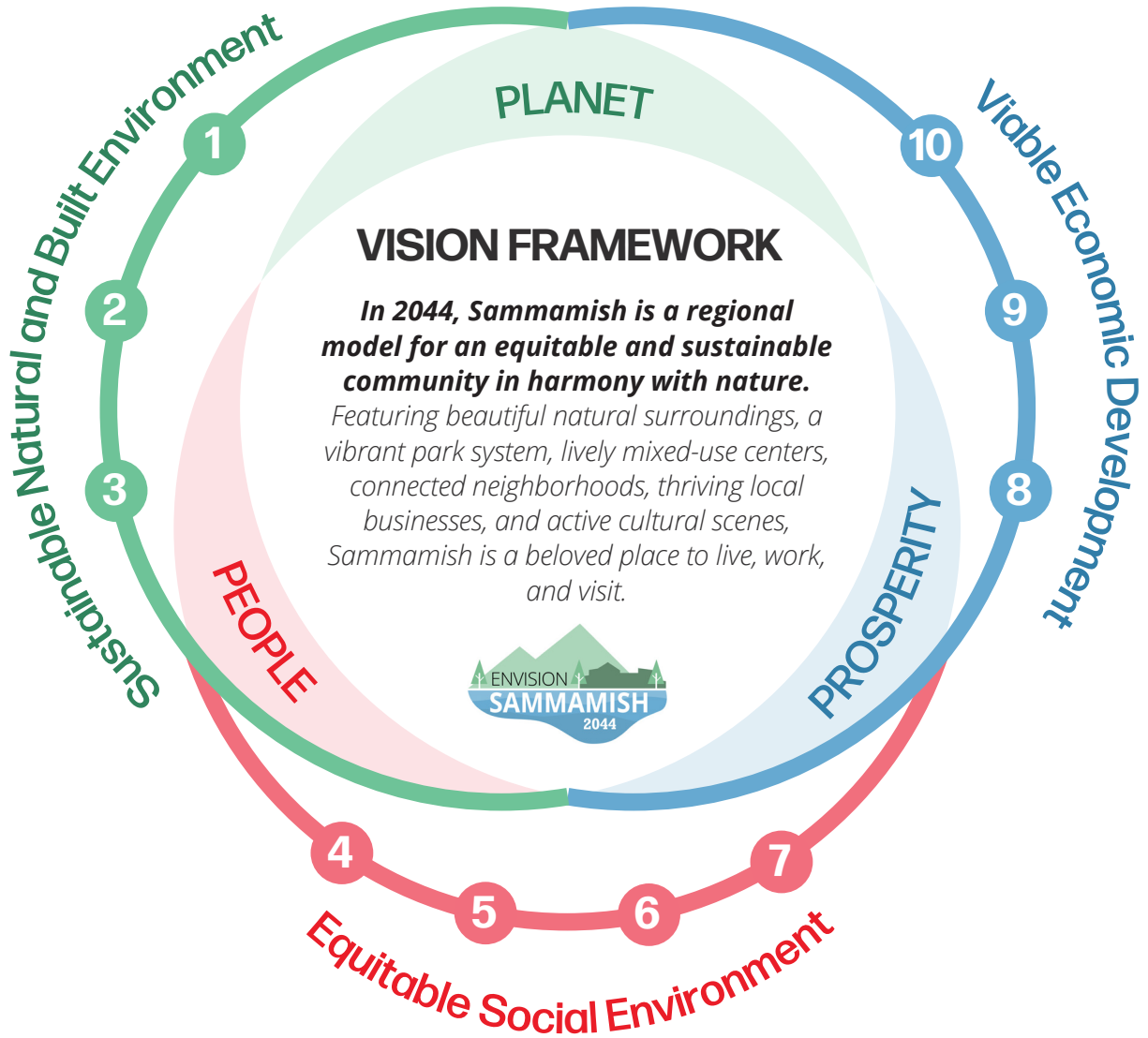
- We ensure that our services and outstanding quality of life are accessible to everyone and that all residents feel a sense of belonging in our community.
- We act with integrity, listen, value others, and treat everyone with fairness and dignity.

3. PROSPERITY

Collective Advancement: Sammamish sets the foundation for all members to thrive, providing access to resources and opportunities that support economic growth, innovation, and shared prosperity across the community.

- We explore new ideas and implement innovative and effective solutions.
- We effectively collaborate with external partners, regional agencies, neighboring jurisdictions, and state and federal delegations to solve our local and regional issues.
- We actively participate in the service of our community.

Vision Diagram



Vision Strategies

Sustainable Natural and Built Environment

- 1 Sustain Natural Environment and Reduce Climate Impacts.** The City aims to protect tree canopies, water features, and natural habitats to sustain the natural environment. The City is committed to reducing and mitigating the climate impacts from buildings, transportation, and City operations.
- 2 Develop Multimodal Transportations.** Work with King County Metro and other transit providers to enhance connectivity within Sammamish and access to the surrounding cities, including walking, biking, and transit network.
- 3 Develop a Distinguished Park and Recreation System.** Create a park, open space, and recreational system that incorporates cultural amenities, and leveraging the unique natural resources of the Pacific Northwest to promote environmental conservation.

Equitable Social Environment

- 4 Ensure Inclusive, Connected, and Safe Neighborhoods.** Plan neighborhoods that are safe, where people can meet, interact, and access retail, restaurants, key services, and other amenities within walking distance.
- 5 Provide a Variety of Housing Choices and Support a Wide Array of Lifestyles.** Expand the range of available housing options to provide affordable and appropriate housing for individuals based on their needs and income.
- 6 Increase Diverse Job Opportunities and Access to Work in Sammamish.** Many residents commute outside of Sammamish for employment; increase opportunities for work within Sammamish.
- 7 Foster Diversity, Equity and Inclusion through Purposeful Engagement and Quality Human Services.** The City will maintain ongoing communication and engagement with the community and organizations on critical planning issues, provide opportunities for input and feedback, and promote the provision of high-quality human services to create an inclusive and welcoming environment.

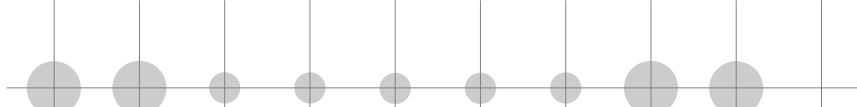
Viable Economic Development

- 8 Build Thriving Town Center and Mixed-use Districts.** The City will support the development of the Town Center that reflects Sammamish's identity and encourage redevelopment of walkable mixed-use districts for more housing, retail, services and amenities.
- 9 Support Local Businesses and Entrepreneurship.** Provide support for a thriving local economy and nurture the community's entrepreneurial spirit.
- 10 Establish Fiscal Sustainability and Diversify Revenues for the City.** The City is dedicated to improving and diversifying its tax base and revenue streams through economic development.

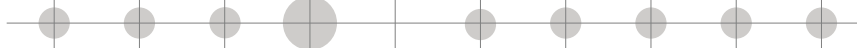
Plan Elements

Land Use
 Environment & Conservation
 Housing
 Transportation
 Utilities
 Park, Recreation, Open Space
 Capital Facilities
 Shoreline
 Climate Change
 Economic Development

Strategy 1



Strategy 2



Strategy 3



Strategy 4



Strategy 5



Strategy 6



Strategy 7



Strategy 8



Strategy 9



Strategy 10

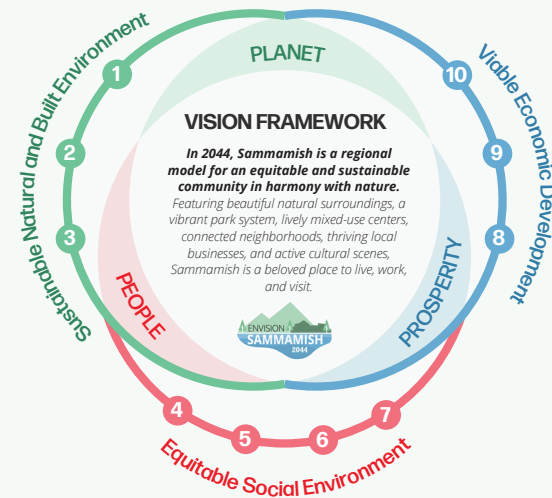


SAMMAMISH 2044 PLANNING VISION

The Sammamish 2044 vision builds on community needs, carrying forward the **Planet** (environmental quality), **People** (social equity), and **Prosperity** (economic vitality) foundations of the 2035 Comprehensive Plan, and adapting them to the evolving context.

To achieve the vision framework, Sammamish 2044 forwards the above three foundations of Planet, People and Prosperity to organize community aspirations into ten vision strategies. The vision strategies are a synthesis of multiple outreach efforts including five Planning Summit workshops with the public, a workshop with the city council, a workshop with the planning commission, a workshop with the city staff, and the Community Visioning project done by the City in Spring 2022.

In 2044, Sammamish is a regional model for an equitable and sustainable community in harmony with nature. Featuring beautiful natural surroundings, a vibrant park system, lively mixed-use centers, connected neighborhoods, thriving local businesses, and active cultural scenes, Sammamish is a beloved place to live, work, and visit.



Planning Values

The planning values pertain to the principles that steer the city's development and management, reflecting the community's aspirations and needs, and serve as an instrument in shaping the city's identity, character, and overall quality of life. In response to the vision and strategies, the following values guide Sammamish's planning to become a sustainable and equitable community by 2044.

1. PLANET

Environmental Responsibility: Sammamish values the natural environment and ecological resources.

- We exemplify and enact sustainable practices in our organization and community.
- We build climate resiliency to adapt to and prepare for climate change impacts, reducing vulnerability, and building recovery capacity.

2. PEOPLE

Inclusivity: Sammamish welcomes all people, regardless of their backgrounds, to live, work, and visit the city, and fosters a community culture that values diversity, equity, and inclusivity.

- We ensure that our services and outstanding quality of life are accessible to everyone and that all residents feel a sense of belonging in our community.
- We act with integrity, listen, value others, and treat everyone with fairness and dignity.

3. PROSPERITY

Collective Advancement: Sammamish sets the foundation for all members to thrive, providing access to resources and opportunities that support economic growth, innovation, and shared prosperity across the community.

- We explore new ideas and implement innovative and effective solutions.
- We effectively collaborate with external partners, regional agencies, neighboring jurisdictions, and state and federal delegations to solve our local and regional issues.
- We actively participate in the service of our community.

Vision Strategies & Plan Elements

Sustainable Natural and Built Environment

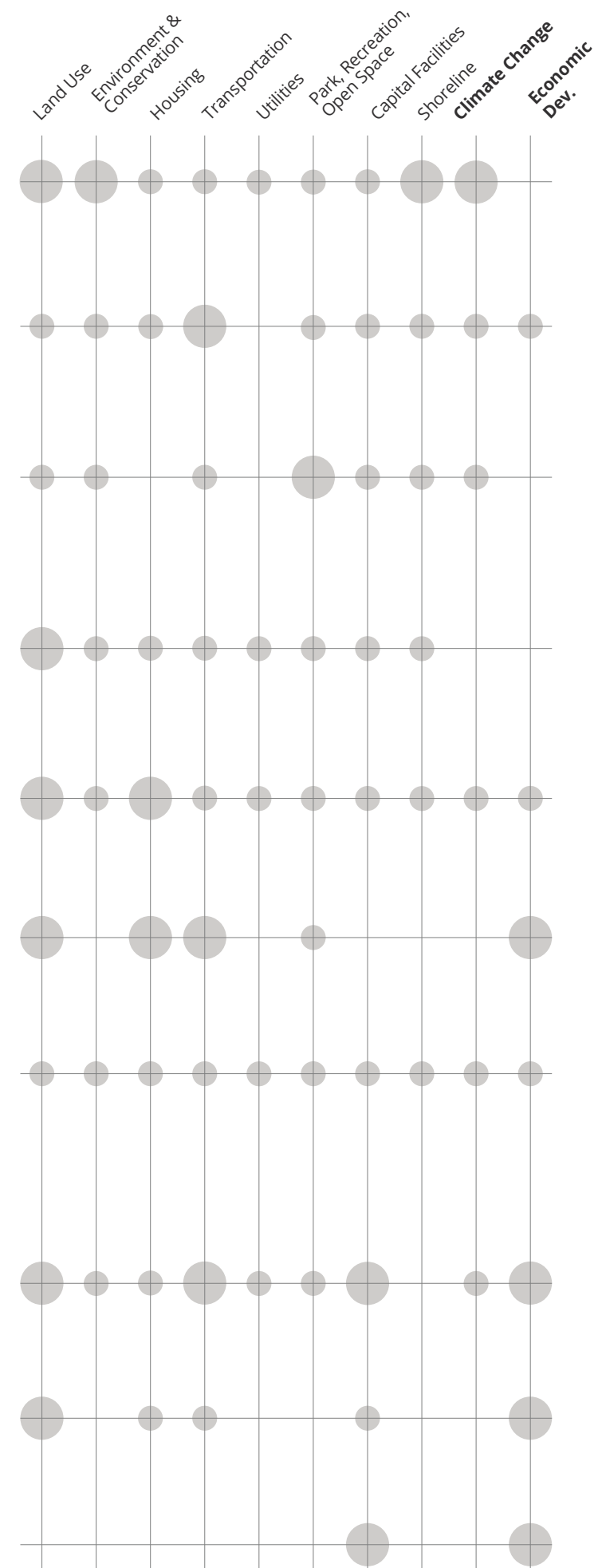
- 1 Sustain Natural Environment and Reduce Climate Impacts.** The City aims to protect tree canopies, water features, and natural habitats to sustain the natural environment. The City is committed to reducing and mitigating the climate impacts from buildings, transportation, and City operations.
- 2 Develop Multimodal Transportations.** Work with King County Metro and other transit providers to enhance connectivity within Sammamish and access to the surrounding cities, including walking, biking, and transit network.
- 3 Develop a Distinguished Park and Recreation System.** Create a park, open space, and recreational system that incorporates cultural amenities, and leveraging the unique natural resources of the Pacific Northwest to promote environmental conservation.

Equitable Social Environment

- 4 Ensure Inclusive, Connected, and Safe Neighborhoods.** Plan neighborhoods that are safe, where people can meet, interact, and access retail, restaurants, key services, and other amenities within walking distance.
- 5 Provide a Variety of Housing Choices and Support a Wide Array of Lifestyles.** Expand the range of available housing options to provide affordable and appropriate housing for individuals based on their needs and income.
- 6 Increase Diverse Job Opportunities and Access to Work in Sammamish.** Many residents commute outside of Sammamish for employment; increase opportunities for work within Sammamish.
- 7 Foster Diversity, Equity and Inclusion through Purposeful Engagement and Quality Human Services.** The City will maintain ongoing communication and engagement with the community and organizations on critical planning issues, provide opportunities for input and feedback, and promote the provision of high-quality human services to create an inclusive and welcoming environment.

Viable Economic Development

- 8 Build Thriving Town Center and Mixed-use Districts.** The City will support the development of the Town Center that reflects Sammamish's identity and encourage redevelopment of walkable mixed-use districts for more housing, retail, services and amenities.
- 9 Support Local Businesses and Entrepreneurship.** Provide support for a thriving local economy and nurture the community's entrepreneurial spirit.
- 10 Establish Fiscal Sustainability and Diversify Revenues for the City.** The City is dedicated to improving and diversifying its tax base and revenue streams through economic development.





ENVISION
SAMMAMISH
2044